

# TEST DEVICES + ACCESSORIES





### Cable Tie, industrial standard

- Nylon, UL tested, flame protection as per UL 94V-2
- Max. tensile stress 50 kg
- packaging unit 100 pieces

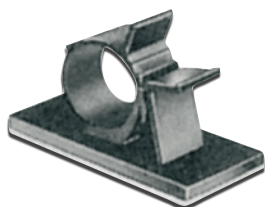
064718 / AKB-1	L 120 x W 2,6 mm
064725 / AKB-2	L 160 x B 2,6 mm
064732 / AKB-3	L 200 x B 2,6 mm



### Cable Tie with marking plate

- Nylon, UL tested, flame protection as per UL 94V-2
- Max. tensile stress 8 kg
- packaging unit 100 pieces

051831 / AKB-1KE	L 100 mm x B 2,5 mm
051855 / AKB-2KE	L 200 mm x B 2,5 mm
051893 / AKB-4KE	L 270 mm x B 4,8 mm



### Round cable holders, self-adhesive

- Diameter variable up to max. 20 mm
- The cable holder can be opened again after closing
- Self-adhesive
- Set = 5 pieces

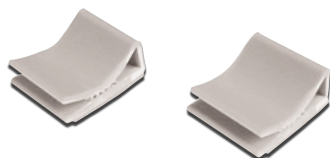
061205 / A-CABLE MANAGER



### Two-Way cable tie attachment base

- Nylon
- Packaging unit 100 pieces.
- For attaching cable ties.
- Self-adhesive designs

051848 / AKB-1SOK For max. 3,6 mm Width, Self-Adhesive



### Ribbon cable clip

PVC, Self-adhesive

051947 / AKHF-1 Cable Capacity max. 20 x 26 x 6,5 mm



### DIGITUS® Reusable cable ribbons, pack of 5 pcs.

- Velcro fastener
- Five different colours
- Total length 16cm
- Width 16mm



170334 / DA-CT4001

Computer

Power

Audio

Video

Telephone

TV/SAT

Raw Cables

Connectors + Adapters

Wall Plates

Accessories + Testdevices

## DIGITUS® Network- and communication cable tester, RJ45 and BNC



- Test function for cables with RJ45, RJ12, RJ11 and BNC male.
- Auto-scan and step by step testing.
- Loop-back: for testing and localising of already laid network or communication cables.
- Continuity: for continuity testing of network or communication cables.
- Open: for localising of disconnected single wires.
- Shorts: locating of short-circuited single wires.
- Miss-wire: identification of non-conform wire assignment.
- Pin to pin configuration: 1 assignment testing.
- Main device with 2 x RJ45 female, remote unit with 1 x RJ45 female.
- Various LEDs for status display, operates with 9 Volt block battery.
- Includes two-language manual and modular BNC adapter.



126454 / DN-14001

## Premium network cable tester, RJ45, BNC

- Backlit LCD display
- 2 x RJ45 connections
- Remote unit with 1 x RJ45 connection
- Preset test modes for 10(100)Base-T, Token Ring, TP-PMD, AT&T 258A, EIA/TIA-568A/B USOC, 10Base-2(BNC)
- 4 additional user test modes can be configured
- Tests assignment, pairs, connection and shielding
- Terminator loopback test, cable testing with up to 16 remote units
- Automatic cable identification
- Delivery includes 2 RJ45 / BNC adapters, 30cm patch cable and storage bag



079248 / ACT-LCS-400

## Modular cable tester, RJ45 & BNC

- Test function for cables with RJ45, RJ12, RJ11 male plugs.
- Tests: continuity, assignment, pairing and shielding.
- Line / voltage detection.
- Main device with 2 x RJ45, 1 x BNC female, remote unit with 1 x RJ45, female.
- Even already laid cable can be tested with the remote unit.
- Various LEDs for status display, operates with 9 Volt block battery.
- Includes synthetic leather carry case.



126096 / ACT-LAN-CT

## Network cable tester, RJ45 & BNC

- Test function for cable with RJ45/11 UTP/STP and BNC plugs, patch panels and modular sockets
- Coaxial cable test using BNC adapter
- Manual or automatic test procedure
- What is tested: throughput, assignment, shielding, pairing based on EIA/TIA 356A / 568A / 568B / Token Ring
- Main device with 2 x RJ45 jack, remote unit with 1 x RJ45 jack
- With the remote unit even cable that has already been laid can be tested
- Supplied with case and BNC adapter



126089 / ACT-LAN-PRO



### Network and cable tester with remote ID modules

- Cable tester with sound generator, network tester and port ID finder.
- 2 x RJ45 connections
- Remote unit with 1 x RJ45 connection.
- Manual or automatic test execution
- Tests: Continuity, assignment, shielding, pairing as per EIA/TIA 356A / 568A / 568B / Token Ring.
- 2-digit, 7-segment display shows the ID for the selected remote unit.
- Display of the network type and network speed.
- Sound generator for detected defective cables. (Tracer not included!)
- Terminator loopback test, cable measurement with up to 25 remote units.
- Automatic cable identification.
- Package includes 25 remote ID modules.

158745 / ACT-LAN-MOD



### PSIBER Data Systems LAN Master Network Link Tester

- Display network type, network speed and duplex mode
- Displays errors and polarity of the connection
- Identifies VoIP (voice over IP) and PoE (power over Ethernet) ports
- Activates the port LED of a hub / switch for clear allocation of a connection
- Display and warning of incorrect duplex settings
- Supplied: 1 RJ45 jack to RJ45 couple 1 x 9V battery plus manual



179856 / ACT-LM26

### PSIBER Data Systems Pinger Plus

- Identifies 10/100 MBit and 1 GBit Link Signals.
- Tests network availability, double IP addresses, transmission errors and response times.
- Pings individual or a list of IP addresses.
- Tests DHCP servers and indicates IP addresses.
- Shows MAC addresses.
- Tests for cable faults, such as swapped wires.
- Included: 4 x AAA batteries, a power supply and manual.

151548 / ACT-PNG60

### DTX-1800



- Intuitive user interface: technicians require less training/adjustment and have more time for testing.
- Test speed: 12 seconds for a Cat 6 certification
- Precision conforms to Level IV. The most accurate test results in the shortest possible time.
- Frequenz range of up to 900MHz ( ideal for 10 Gigabit Ethernet, Class F and CATV )
- Extended, time-saving diagnosis. Accurately determines the error location and is the only tester to suggest remedial action -> this saves time when troubleshooting.
- Certifies a glass fibre pair in 12 seconds with DTX single mode and multi-mode glass fibre modules.
- 12 hour battery operation
- Achieve faster results. From configuration to compilation of test reports:
- LinkWare™ cable test management software provides you with a simple user interface and time-saving features so you can work more productively.

170686 / ACT-DTX 1800

## Intellitone 100

- Localise cables quickly and easily
- No more confusion when localising cable: hiss and interference are eliminated
- Remote cable localisation: even in an active network
- Precise identification of cables and wires in a bundle, despite signal radiation
- Visual monitoring of twisted pair installation with end-to-end cable map
- (interruptions, short circuits and interchanged pairs)
- Safe and effective localisation in active networks
- Compatible with analog toners and probes
- Suitable for copper wire, included shielded (STP) and UTP cables, coaxial cables at 75 or 50 Ohm,
- Tested 2-core cables in control, safety and general wiring.
- 10 Base-T or 10/100 Base-T data communication networks and conventional phone services
- Dimensions 14.1cm x 7.5cm x 3.2cm



CABLES

Computer

Power

179863 / ACT-MT-8200-50A

## PC cable test device

All typical PC cables can be tested with this test device

- Tests continuity, connection and assignment
- Displays the assignment via LEDs
- LEDs: 36x input, 36x output, 1x manual test, 1x automatic test, 1x shielding
- 5 buttons: test, auto / manual, test speed, reset, on/off
- Automatic and manual test execution
- Connections: D-Sub9 male / female, D-Sub15 male / female, HD D-Sub male / female, D-Sub25 male / female, CENT 36 female, BNC male, RJ45 female,
- USB A+B female, IEEE 1394 6-pin female
- Operates with 9 Volt block battery, connection for optional 9V / 150 mA power supply



Audio

Video

Telephone

TV/SAT

126782 / ACT-PC-PRO

## DIGITUS® PC ATX power supply tester



Wrong dimensioned and faulty PC power supplies result in an instable computer system can damage the hardware. Troubleshooting such a faulty system usually took much time and was complex. But now this compact, fast and easy device shows the proper status of all supplied voltages at a glance.

- ATX power supply tester
- Shows the accurate status of all power supply voltages
- Fast and easy plug & play operation
- Connectors for testing with 20 / 24 pin mainboard connectors, 4, 6 and 8pin extension connectors as well as floppy and SATA connectors
- Robust aluminium housing
- Essential for service personnel and computer enthusiasts



Raw Cables

Connectors + Adapters

Wall Plates

Accessories + Test devices

200178 / DA-70601

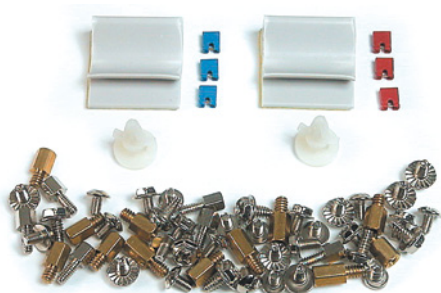
## Mainboard and drive mounting kit



- 28x screws for mounting mainboard, case cover and hard drives
- 10x screws for mounting CD-ROM, DVD drives, etc.
- 6x plastic mainboard spacers
- 2x metal spacers and insulating washers

107712 / A PCMOUNT-KIT1

## Mainboard and drive mounting kits



- 14x screws for mounting mainboard, case cover and hard drives
- 20x screws for mounting CD-ROM, DVD drives, etc.
- 2x plastic mainboard spacer; 12x metal spacer (long and short threads)
- 6x jumpers; 2x ribbon cable mounting clips with adhesive base
- 6x D-Sub screws, threading long.

107729 / A PCMOUNT-KIT2